

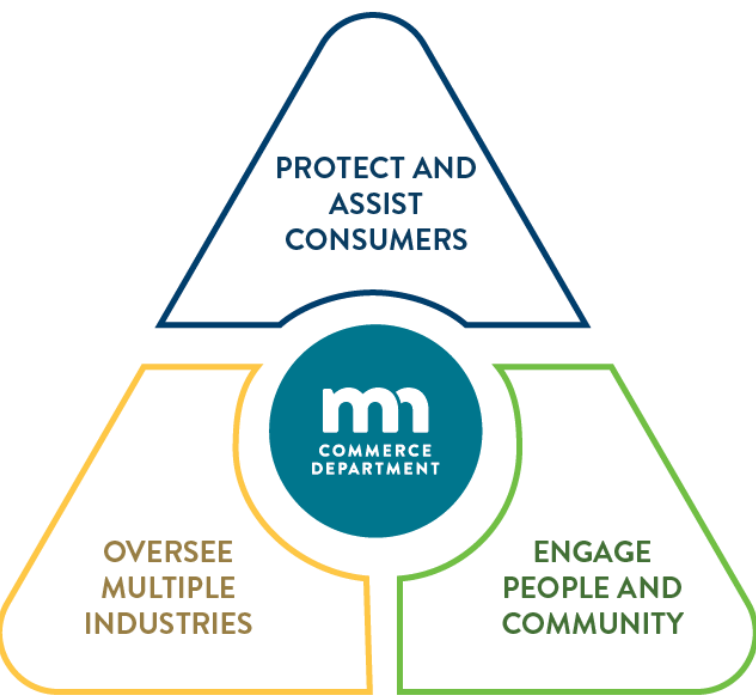


# Legislative Energy Commission

**Michelle Gransee** | Deputy Commissioner of Energy

**Louise Miltich** | Assistant Commissioner of Regulatory Affairs

MN Department of Commerce, Energy Division

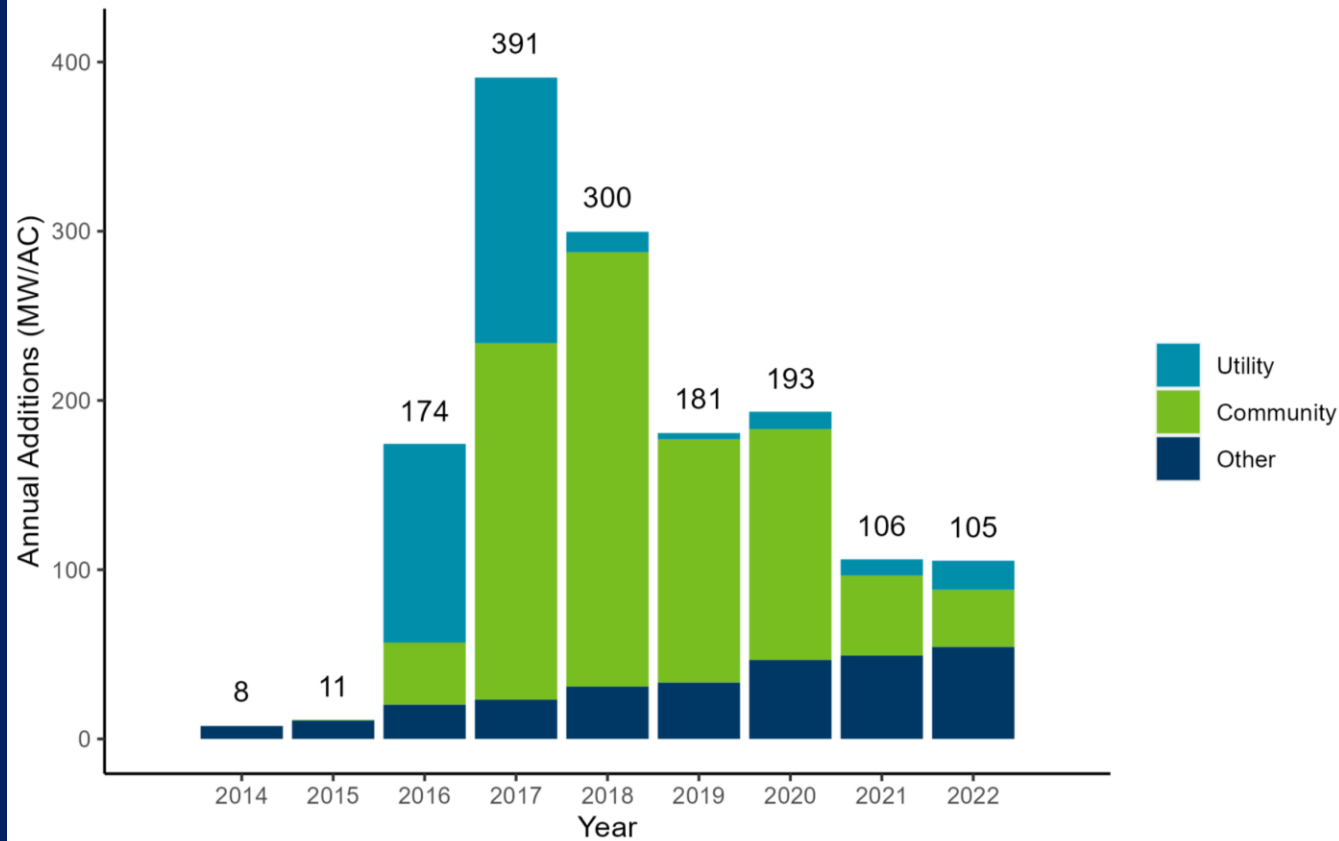


COMMERCE MISSION

STRATEGIC PRIORITIES



# Minnesota's Annual Solar Installations



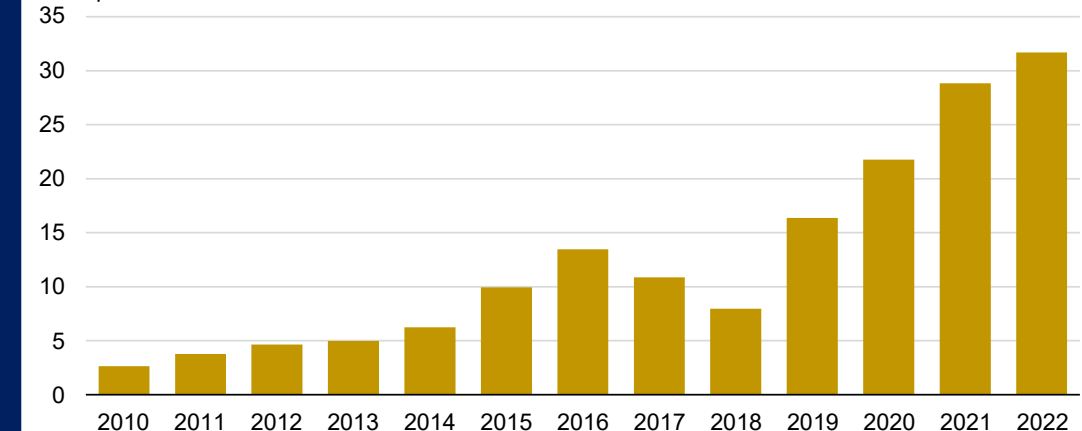
Source: Minnesota Public Utilities Commission Annual Distributed Generation Reports, Energy Information Administration Form EIA-860

Solar Growth  
in MN has declined

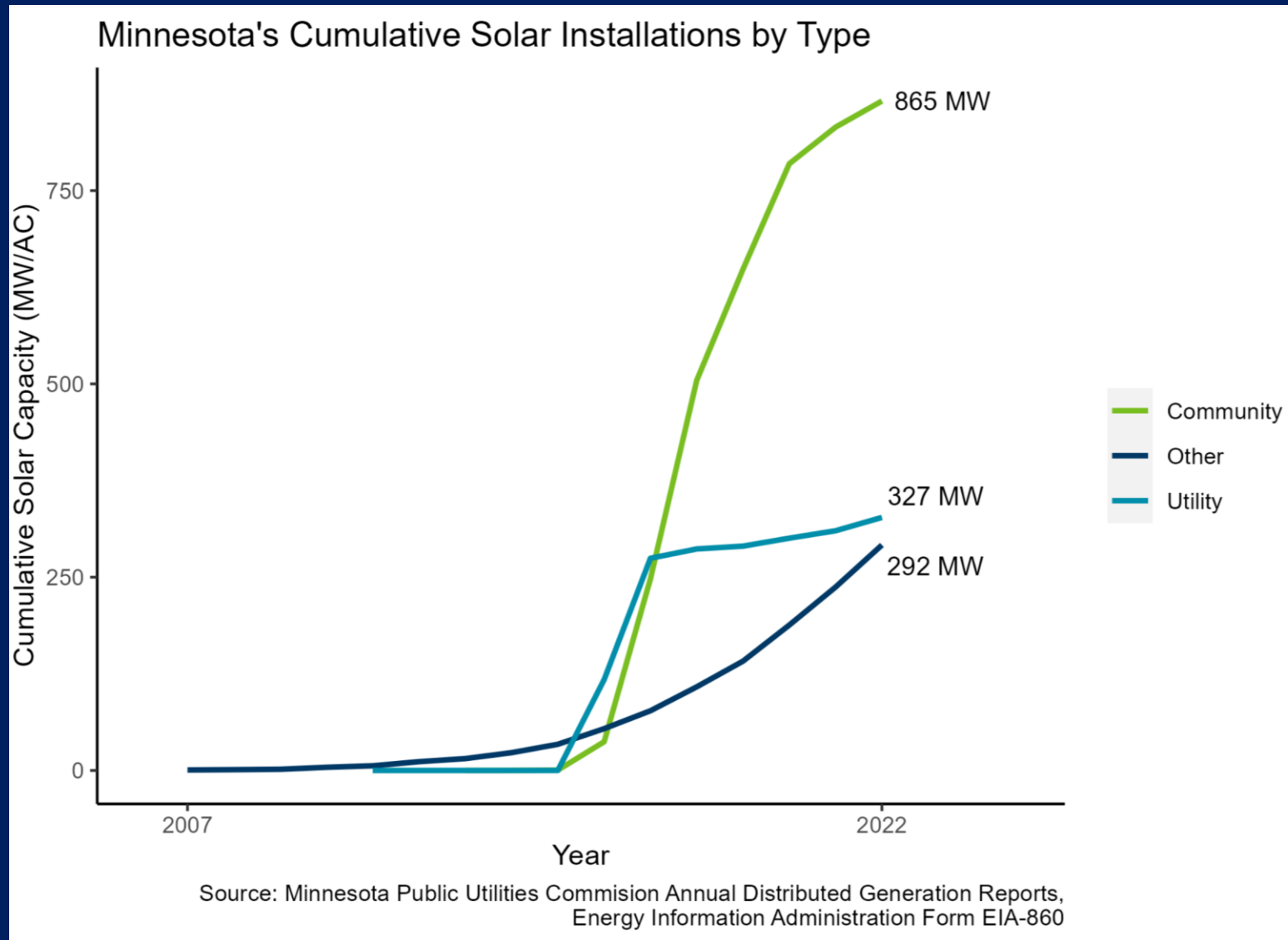
While growth in US has  
accelerated

## Annual solar photovoltaic panel shipments, United States (2010–2022)

million peak kilowatts

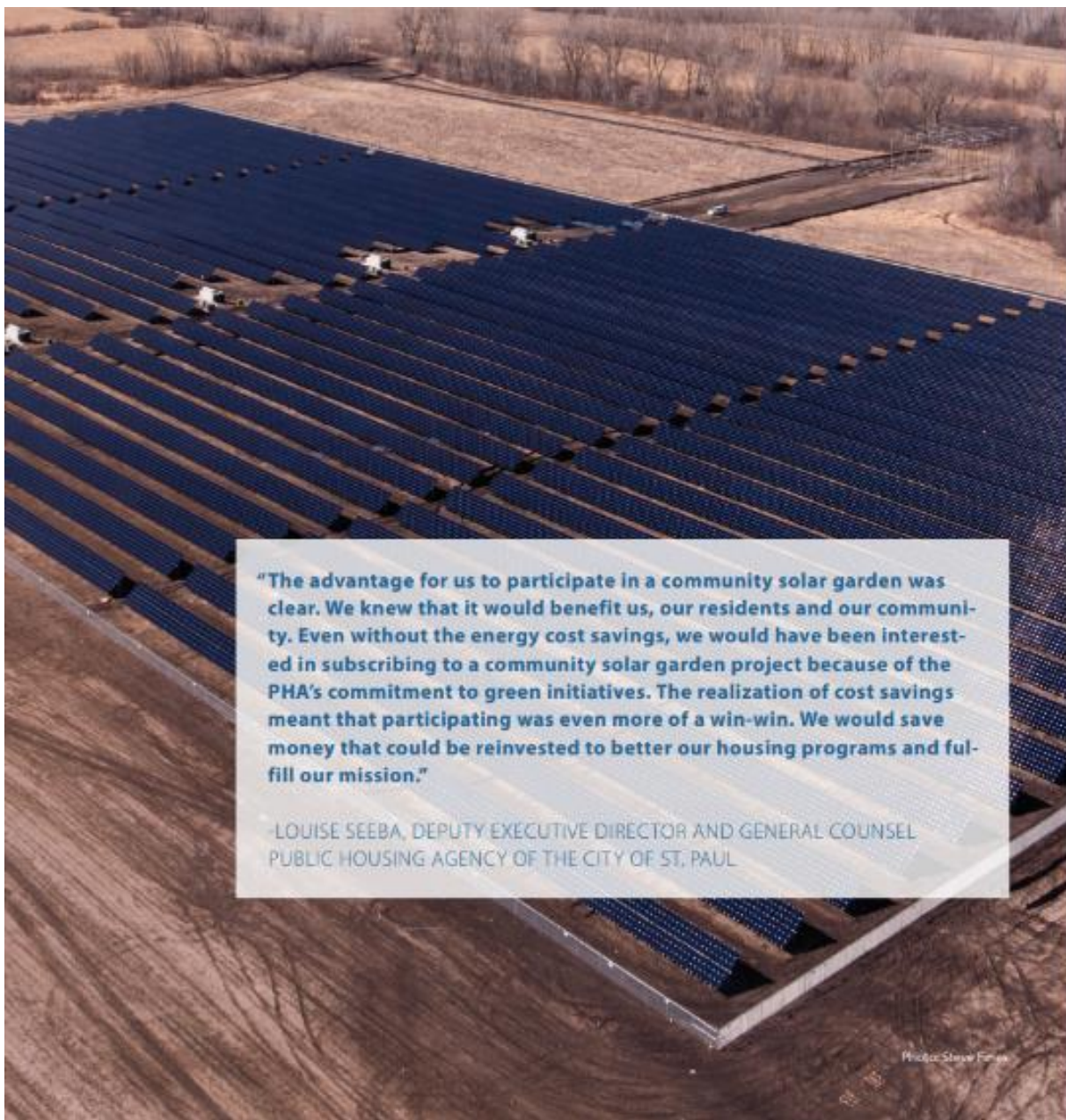


# Solar Growth in Minnesota



## Impact to Ratepayers: ARR/VOS vs. LMI Accessible

- ARR and VOS Garden Cost (2024 projection): **14.24 cents/kWh**
- LMI Accessible Garden Cost (2024 projection): **9.59 cents/kWh** (lower bound) **to 13.86 cents/kWh** (upper bound)



**"The advantage for us to participate in a community solar garden was clear. We knew that it would benefit us, our residents and our community. Even without the energy cost savings, we would have been interested in subscribing to a community solar garden project because of the PHA's commitment to green initiatives. The realization of cost savings meant that participating was even more of a win-win. We would save money that could be reinvested to better our housing programs and fulfill our mission."**

**- LOUISE SEEBA, DEPUTY EXECUTIVE DIRECTOR AND GENERAL COUNSEL  
PUBLIC HOUSING AGENCY OF THE CITY OF ST. PAUL**

## Benefits to Ratepayers



FUEL CLAUSE #s =  
Apples & Oranges



Key Ingredients =  
Apples to Apple Pie





# The Opportunity





## The Inflation Reduction Act: “Stackable” Credits





# 2024 and the newly revised CSG Program



# 2024: The Comparison

