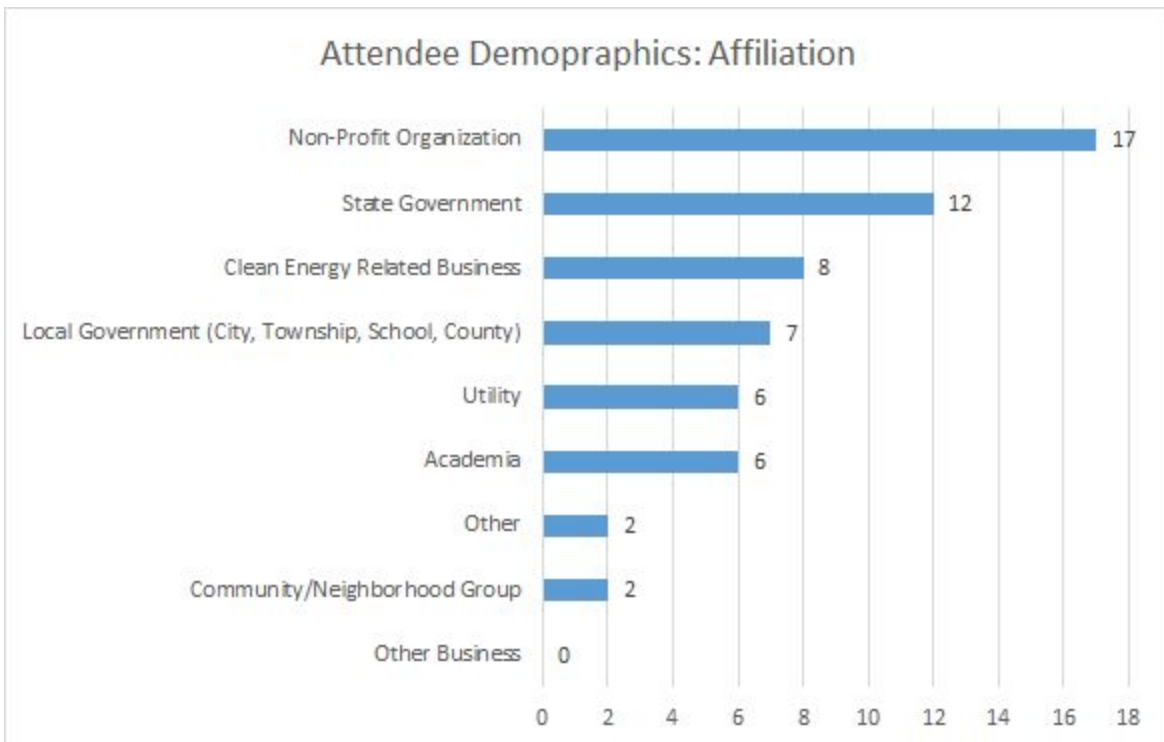
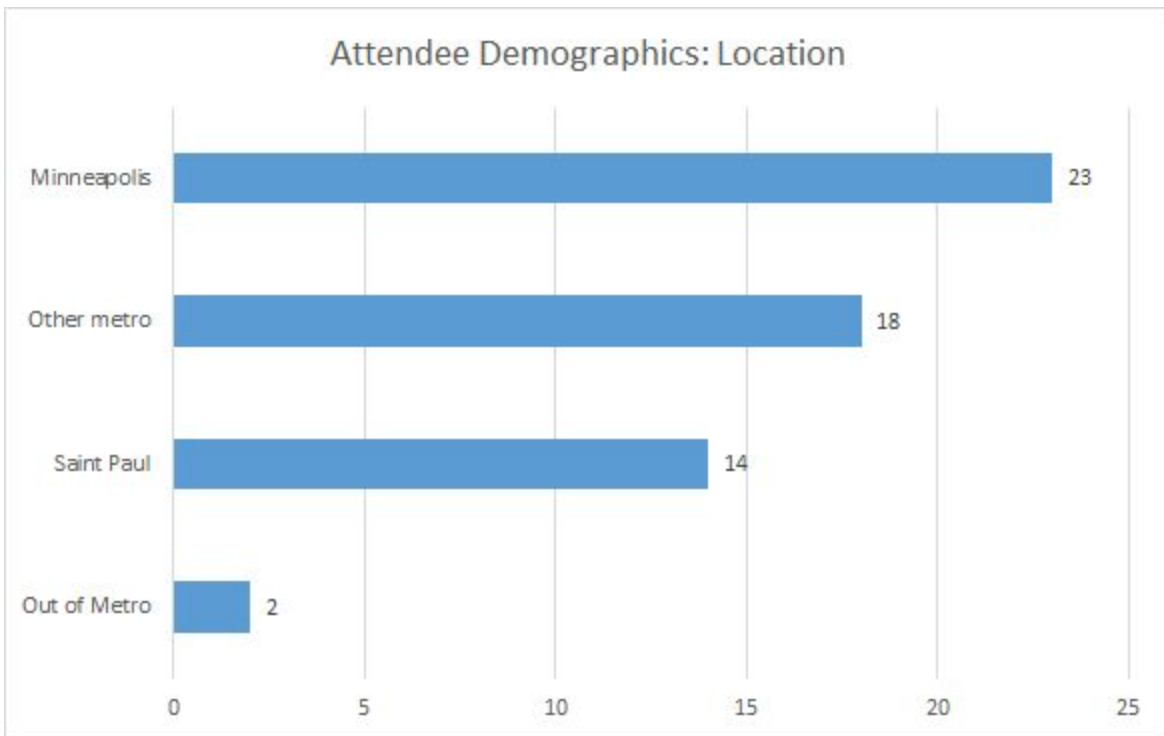
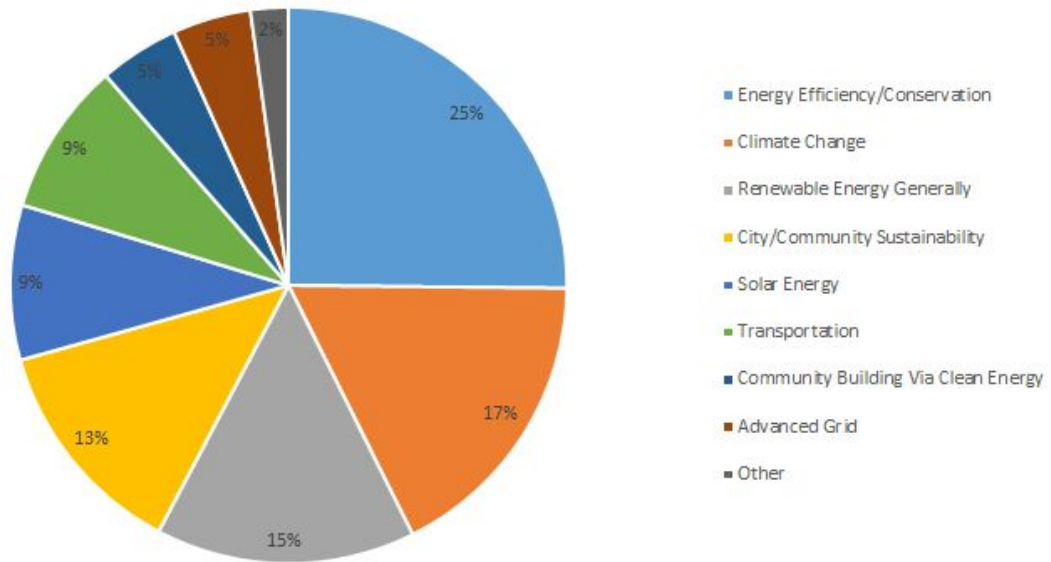


Metro CERT Event Polling Discussion

10/22

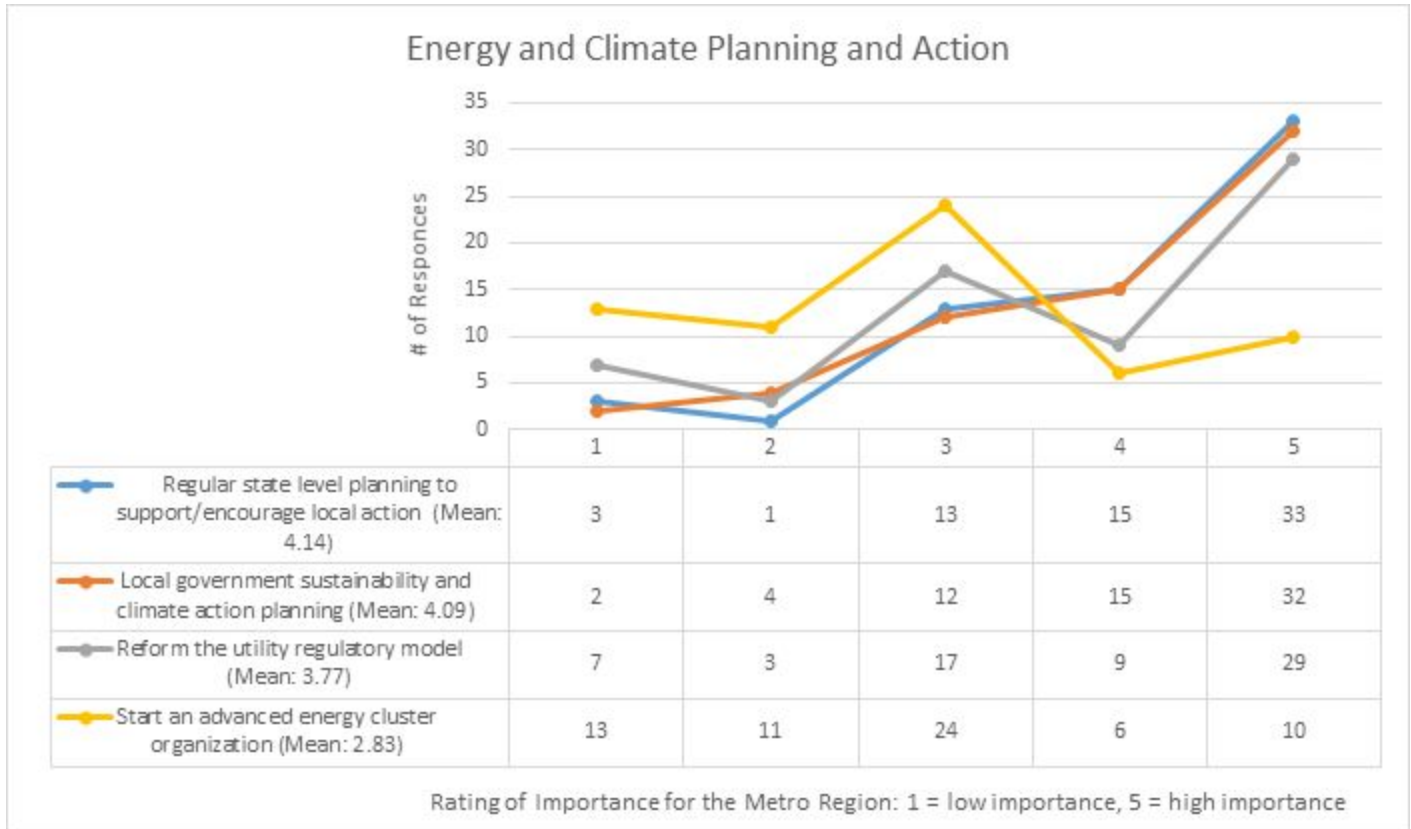


What are attendees passionate about?



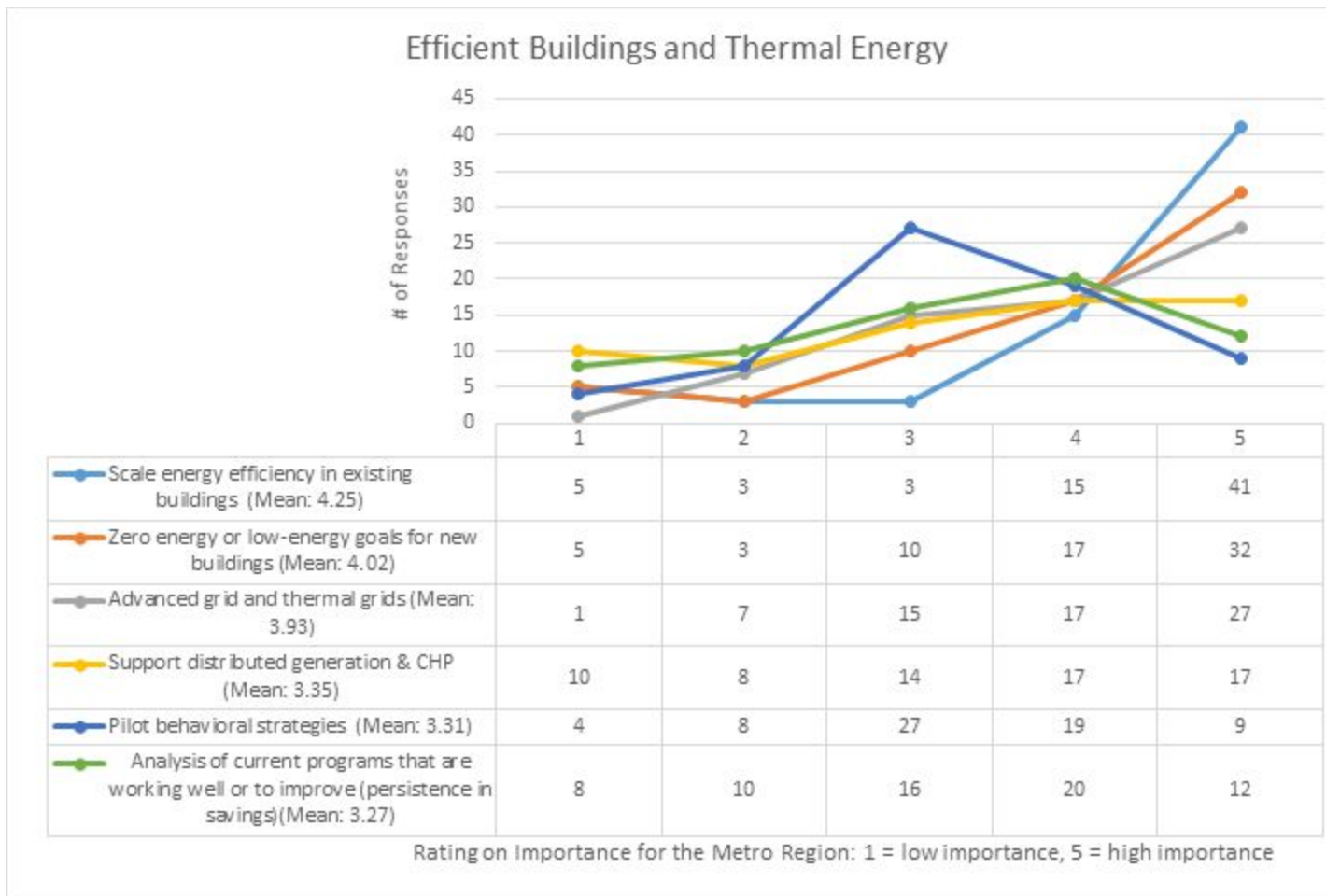
Energy & Climate

- adv. Energy cluster – good idea, but not CERTs’ strengths.
- What can we actually achieve in the next 10 years?
- Our planning is great – put resources in the hands of local governments, especially
 - Sustain the planning and support
 - Tech. resources are needed – vendor selection, finance expertise, etc.



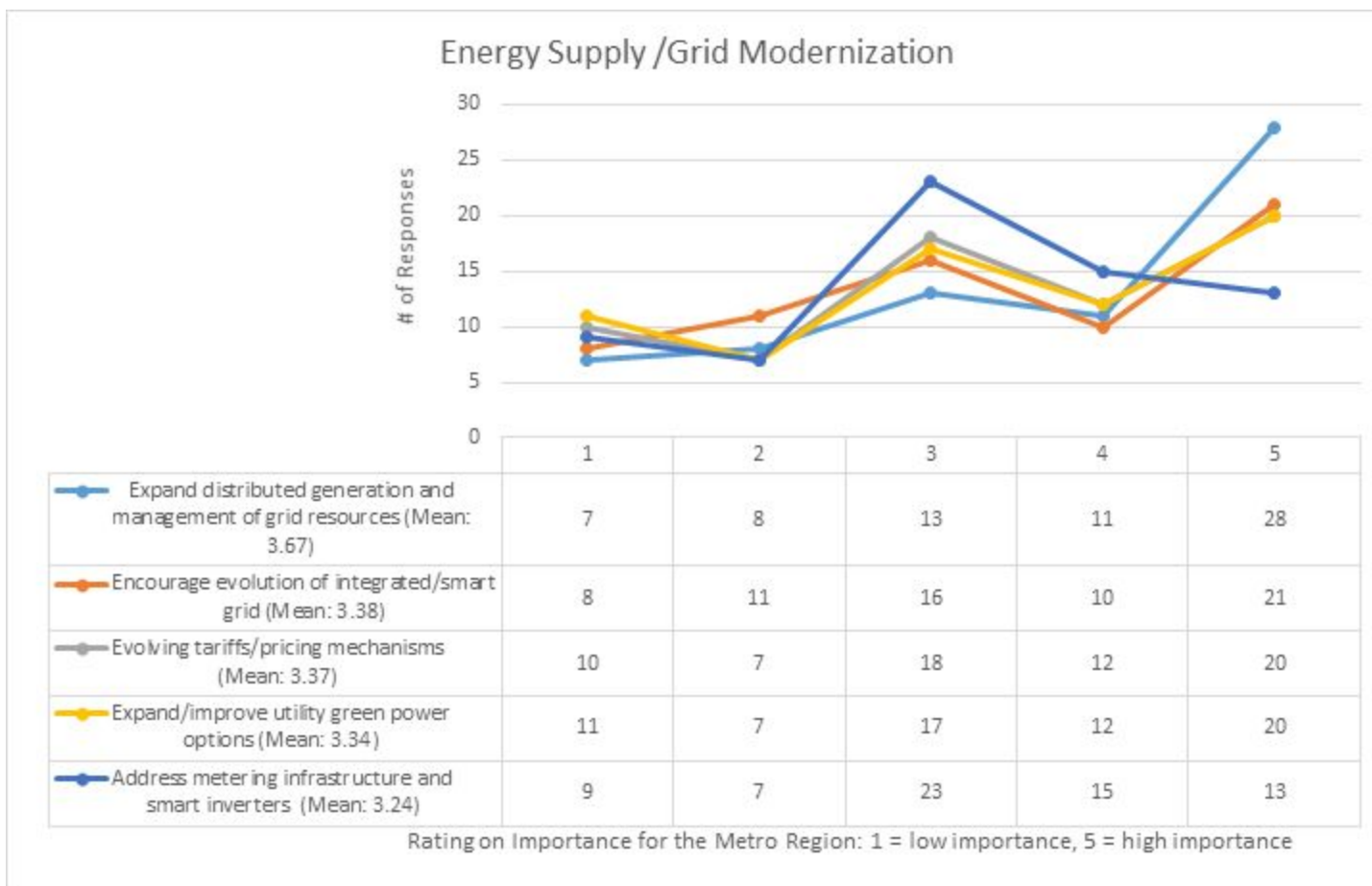
Eff Buildings & Thermal

- Old buildings – lots of opportunities
 - Fewer stakeholders you have to engage if you focus on commercial and industrial buildings vs. residential
- Behavioral – as more things can be automated, there will be more opportunities for this
- Transit oriented development
- Efficient delivery and CHP – energy systems are old and need to be invested in – important to everyone
 - Revitalizing those will have biggest impact



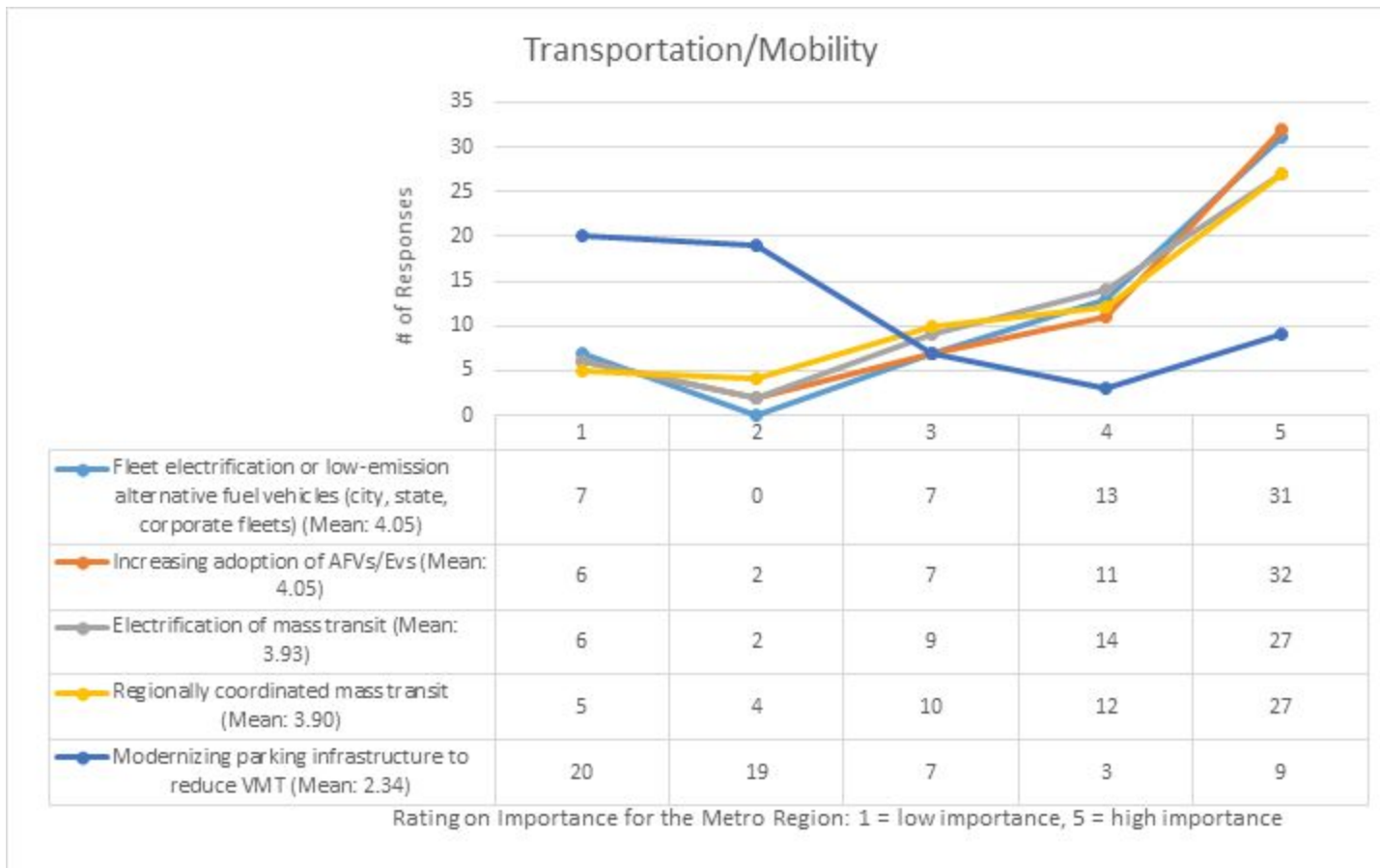
Energy Supply & Grid Modernization

- What's up there (referring to the polling options) isn't necessary the most effective ways of addressing the topics – top-down policy is
- How are we limiting the 2-way grid opportunities by continuing to talk about “customers” + not recognizing them as producers/energy service providers
- Measurement changed my behavior
- We're going to have residential spot pricing eventually – in Europe they do – day before, get the next day's hourly price – that's the future
- 2 way communications --> managing appliances etc. is a big opportunity to increase efficiency
- The tools are already there to improve energy management – it's available



Transportation

- EVs --> cleaner air
- #4 & #5 (4- modernizing parking infrastructure to reduce VMT, 5-Regionally coordinated mass transit) have opportunities for cities – additional benefits beside climate and air quality
 - Eg better use of city space other than for parking
- Top 3 – the ease of getting those going depend on
 - Incentives
 - Fleet and buses – as fast as they can be rolled out if you can get buy-in from the right entities – maybe less impact but easier to implement
- Transit use vs. individual vehicles?
 - VMT dropping, not sure if that's same for metro
 - Small percentage takes transit in the metro
 - Downtown Minneapolis 30-40% commuting by other than solo-driver vehicles
 - Statewide under 10%
- Chicken/egg questions – if it's there, people will use it – the more you invest in transit where people want to use it, the more people will take transit



Question 16

Date: 2015-10-22

Type: open

Question: What is missing from this list?

Respondents: 72

Responses:

MinimumGridBikeways

Affordable

Agriculture

Airplanes

AirQuality

Bicyclinginfrastructure

Bikes

Bikes

Bikes

Bycycle-infrastructure

Clarity

Clarity

Community involvement

Community wind gardens

Conservation

Consumption based energy

Costs

Cost to poor

Equity

Distribution System Planning

Educate Communities

Education

Education

Education

Education

Energy storage

Energy storage

Energy storage

Energy storage

Equity demand response

Equity

Radical Vision

Geothermal

Get Rest Of World In Sync

In fill development
Industrial Energy
Industry and agriculture
PV/EV
Infrastructure
Kids input
Land use
Land use mixed-use storage
Land use
parking meters
LCA
Meaningful Public Decision Making
Democratic Participation
Optimal-renewable-penetration
Optimized Buisness Scheduling
Pedestrian Paths
Policy for Carbon Smart Land Use Planning
Policy Investment
Public Policy
Recycling
Redefine Energy Consumer
Research!
Rural
Rural Minnesota Farming
Small Business Investments Near Transport
Solar; Off-Grid, AC-Coupled; Battery Storage
Solar Thermal Heating
Spurring-innovation energy-storage
Street Redesign
Subways for transit
Support-for-startups
Transit investment & TOD
Trash reduction
Urban Farms
Workforce